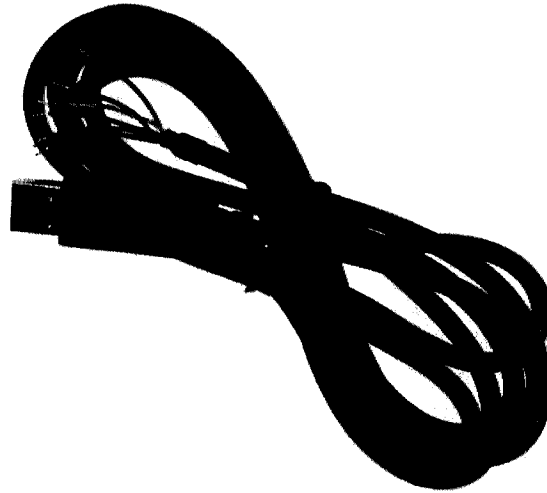

Quick Start Guide

USB to NMEA Serial Adaptor Cable (X500.010)



1. Introduction

Congratulations on the purchase of your USB to NMEA Serial Adaptor Cable. It is recommended that your cable is installed by a professional installer. You will need to connect the wires to a suitable electrical connector or terminal block (not supplied).

2. Before you start

This cable is designed to connect conventional NMEA 0183 or RS232 serial ports to a PC via a USB port. It does not provide any optical isolation and should full opto-isolation be required, then this cable should not be used. However, in most pleasure boat marine installations, opto-isolation is not necessary and this cable will allow good electrical interfacing between the PC and Marine Navigation Equipment.

The adaptor cable has the interfacing circuitry built-in to the USB connector and when plugged in to the PC will be seen by Windows as a USB device, which will trigger the "Found New Hardware Wizard". It is important that you have the "AIS Resource CD" supplied with the cable, in the PC when you first plug the cable in to the PC – see installation section.

3. Installation

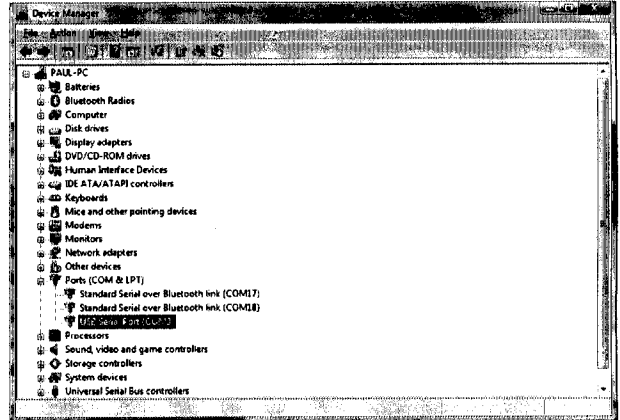
The adaptor cable is a bi-directional interface and also has the extra "hand shaking" signals required by some RS232 devices. These are not necessary for NMEA 0183 and only three of the six wires are used in most marine installations.

The cable wiring colours are shown on the reverse of this page along with a typical marine connection diagram.

USB to NMEA Adaptor Quick Start Guide

Prior to plugging the USB connector of the NMEA Adaptor in to your PC, insert the "AIS Resource CD" in to your PC's CD drive and wait for windows to recognise it. Then plug the USB connector in to an available USB port on your PC and wait for the Windows "Found New Hardware Wizard" to start. Follow the on-screen directions and when given the option of searching automatically or browsing for the driver, select browse and direct windows to the Driver folder on the CD.

Once the driver is installed correctly, it should appear in the Ports (COM & LPT) section of the Device Manager and you will be able to see what COM port number has been allocated to it, COM3 in this case (varies from PC to PC).



Wiring Colours;

COLOUR	NAME	TYPE	DESCRIPTION
--------	------	------	-------------

Brown	CTS#	Input	Clear to Send Control input / Handshake signal.
Red	POWER	Output	Not Used – connected to GND
Green	RTS#	Output	Request To Send Control Output / Handshake signal.

Note: Only the wires highlighted in grey are used in most marine installations

Connection Diagram;

