




Effekter av delvis ekskavering i én prosedyre versus delvis ekskavering i to prosedyrer av dype primære karieslesjoner i permanente tenner

Lina Stangvaltaite-Mouhat DDS, MPH, PhD
SENIORFORSKER TKØ

1

Effects of **Partial excavation in one procedure versus partial excavation in two procedures of **P**RImary deep **C**aries in permanent teeth**

A randomized multinational clinical trial



2

CONTENT


- 01 What is primary deep caries in permanent teeth
- 02 What is partial excavation in one procedure and in two procedures
- 03 Why this trial was needed
- 04 Who is behind PAPRICA
- 05 How do we do it
- 06 Preliminary results

3

CONTENT

- 01 What is primary deep caries in permanent teeth
- 02 What is partial excavation in one procedure and in two procedures
- 03 Why this trial was needed
- 04 Who is behind PAPRICA
- 05 How do we do it
- 06 Preliminary results

4

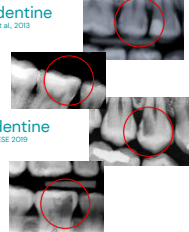


The progression of carious lesion – ICDAS
<http://www.terveystyöjasto.fi>

5

How 'deep caries lesion' is defined in the literature

- In the inner 1/2 of the dentine
Rudolf et al., 2008; Mertz et al., 2010
- In the inner 1/3 of the dentine
Ekstrand et al., 1997; Grytten et al., 2013; Maltz et al., 2011; ICCD 2019
- In the inner 1/4 of the dentine
Masler and Pawlak, 1977; Bjørndal, 2010; ESE 2019
- Into the pulp
ICDAS, ESE 2019



6

Strict inclusion criteria:
In the inner ¼ of the dentine and intact dentine zone between pulp and caries lesion

PAPRICA training material

7

Calibration in radiographical diagnostics and removal of carious tissue in deep lesions

Azam Bakhtiarzadeh¹, Mette Boserup¹, Lars Havestøl¹, Hanne Gassli², Helene Fransson³, Lina Stangrutek⁴, Lars Rjendal⁵

Figure 3 Radiographical assessment of four cases, 55 dentists participated

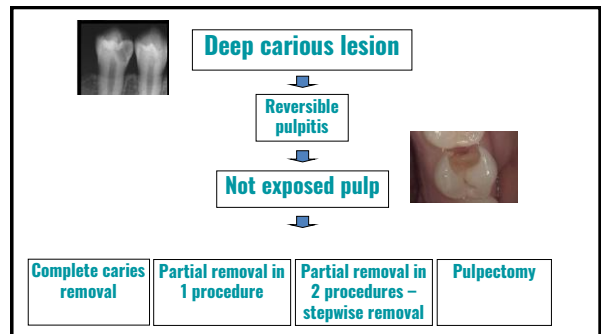
Figure 1: Five radiographical images of teeth with carious lesions.

8

CONTENT

- 01 What is primary deep caries in permanent teeth
- 02 What is partial excavation in one procedure and in two procedures
- 03 Why this trial was needed
- 04 Who is behind PAPRICA
- 05 How do we do it
- 06 Preliminary results

9

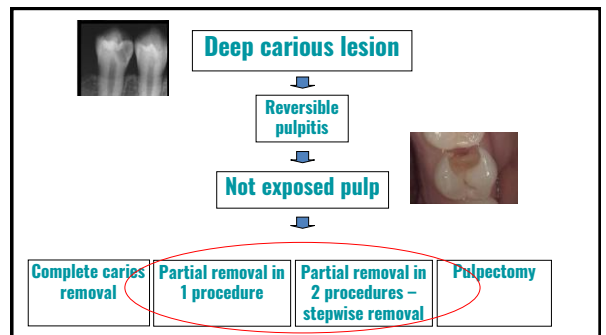


10

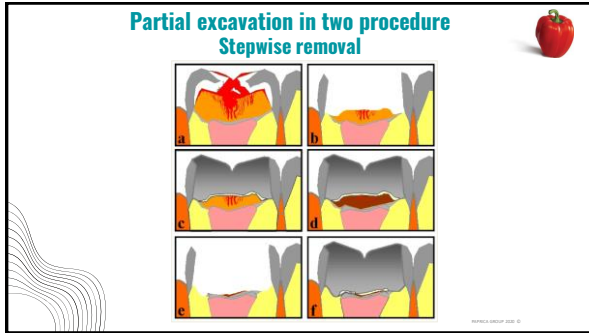
Hvordan vil du behandle denne dype karieslesjonen?

25 år gammel kvinne med en asymptomatisk dyp karieslesjon

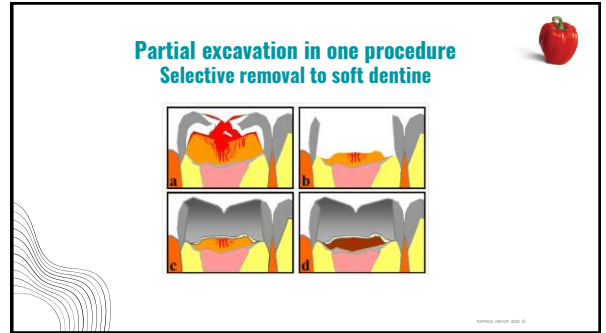
11



12



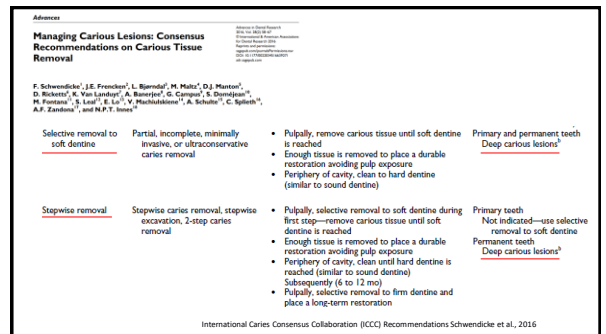
13



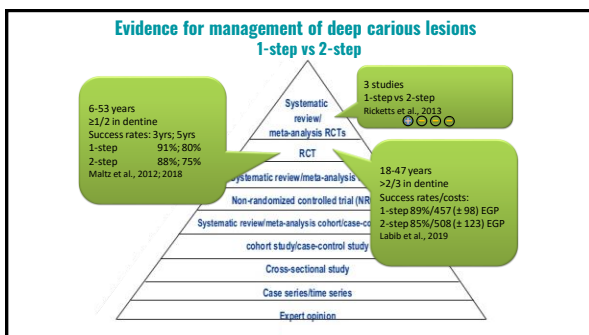
14



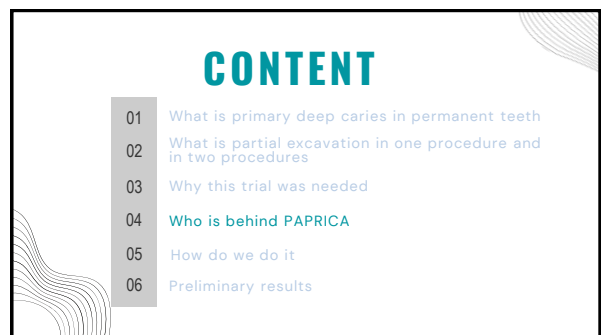
15



16



17



18

Steering committee

- Helena Fransson
- Anna Nordström
- Neeraj Gugrani
- David Ricketts
- Kim Ekstrand
- Lars Björndal
- Paul MH Dummer
- Christian Gluud
- Irina Kuzmina
- Annika Björkner
- Sufyan Garoushi

Principal Investigator


Denmark, Sweden, UK, India and Russia



19

CONTENT



- 01 What is primary deep caries in permanent teeth
- 02 What is partial excavation in one procedure and in two procedures
- 03 Why this trial was needed
- 04 Who is behind PAPRICA
- 05 How do we do it
- 06 Preliminary results



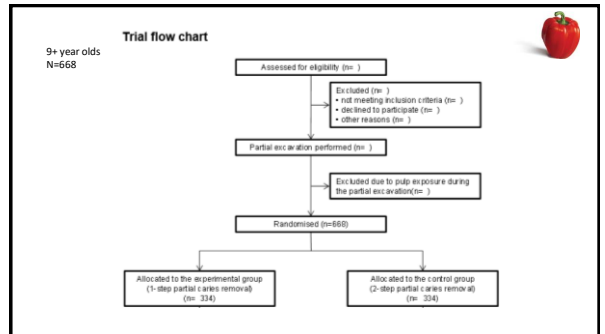
20

Centres

Trial size: Consecutive patients with deep caries at the participating centres in Scandinavia, UK, Lithuania, Russia, and India. The trial will comprise 668 patients.

21



22

PAPRICA

Tilbage til start | Skift kodeord | Log ud

Patient: dt0f t0f
Du skal bruge følgende oplysninger til randomiseringen

Patient ID: 000010
Alder: mellem 9 og 10 år
Køn: mandlig

Randomisering
Lad os randomisere dig til et af de to behandlingsgrupper.
www.randomizer.at/random

Resultat af randomisering
Resultat for randomiseringen er angivet her:
 1-step behandling (partial caries removal - 1 behandling)
 2-step behandling (stepwise excavation - 2 behandlinger)



23

Randomiser

Site: (No Site) All users not associated with any other trial site



Subject ID:

Age: 9-10 years

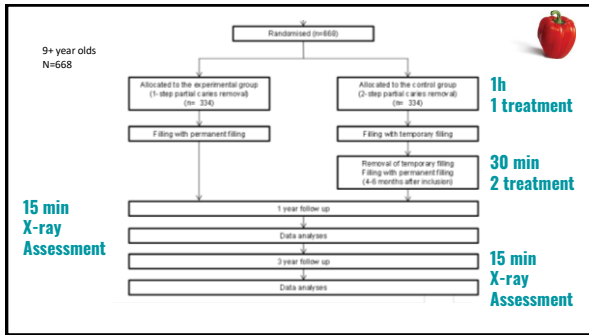
Color: light yellow/brown

Comments:

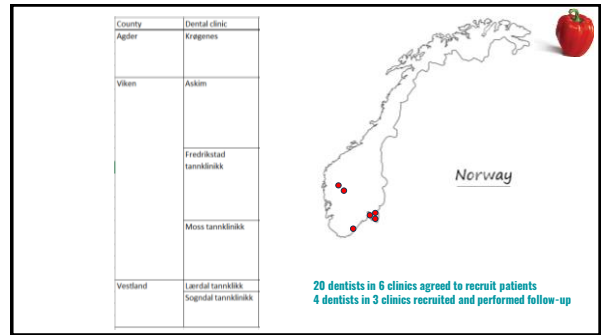
Options: Reduced set of treatments

24



25



26

PAPRICA

Home Change password Logout

Effects of Partial excavation in one procedure versus partial excavation in two procedures of Primary deep Caries in permanent teeth - A randomised, multicenter clinical superiority trial with blinded outcome assessment

New_patient
Patient_list

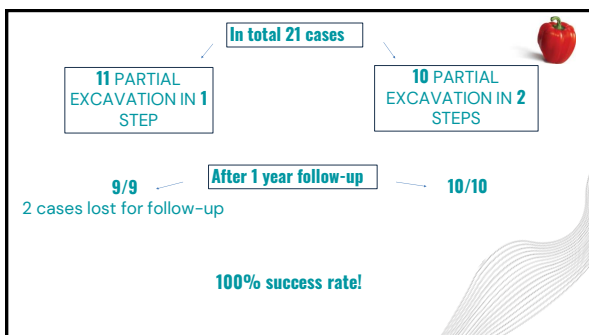
Helpdesk: andreas@helse-bergen.no
andreas@helse-bergen.no

27

CONTENT

- 01 What is primary deep caries in permanent teeth
- 02 What is partial excavation in one procedure and in two procedures
- 03 Why this trial was needed
- 04 Who is behind PAPRICA
- 05 How do we do it
- 06 Preliminary results

28



29

THANK YOU

**PAPRICA-dentists for all your support!
Every case counts!**

30